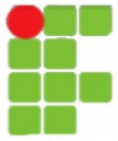


# Servidor POP3

---



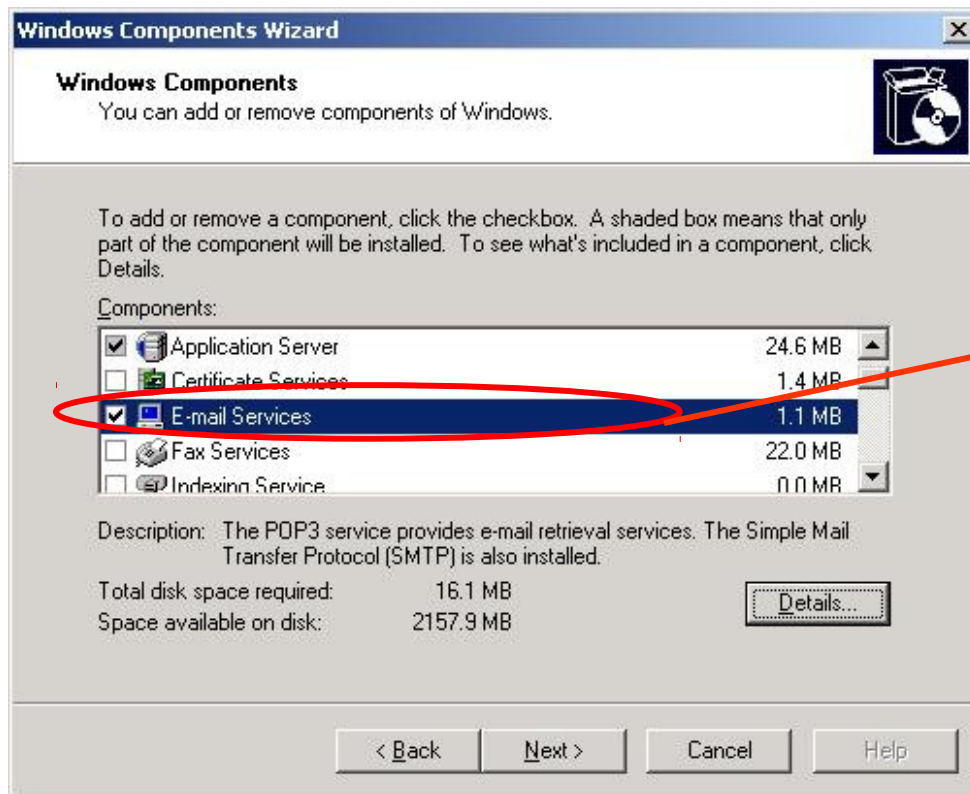


# servidor POP3

---

- **Windows 95:** Usa FAT 16, era plug and play.
- **Windows 98:** usava FAT 32, mas suportava 16. Tem maior interação com a internet (Internet Explorer e outlook).
- **Windows Me (Milenium):** Foi lançado em 2000, suas mudanças importantes não foram consideráveis.
- **Windows NT:** criado para ser utilizado em ambientes de gerenciamento de rede (corporativo). É multiusuário, utiliza NTFS e suporta FAT 16.
- **Windows 2000:** sucessor do NT com vantagem de entender FAT 32.
- **Windows XP:** tem visual melhorado, com versões home (doméstico) e professional (corporativo). Suporta FAT 32 e NTFS.
- **Windows 2003 server:** Para gerenciamento de servidores de redes em empresas. Veio substituir o Windows 2000 server.
- **Windows Vista:** Mais recursos de segurança e melhoria visual.
- **Windows 2008 server:** Virtualização, segurança e gerenciamento.
- **Windows seven:** segurança, melhoria visual...

# servidor POP3

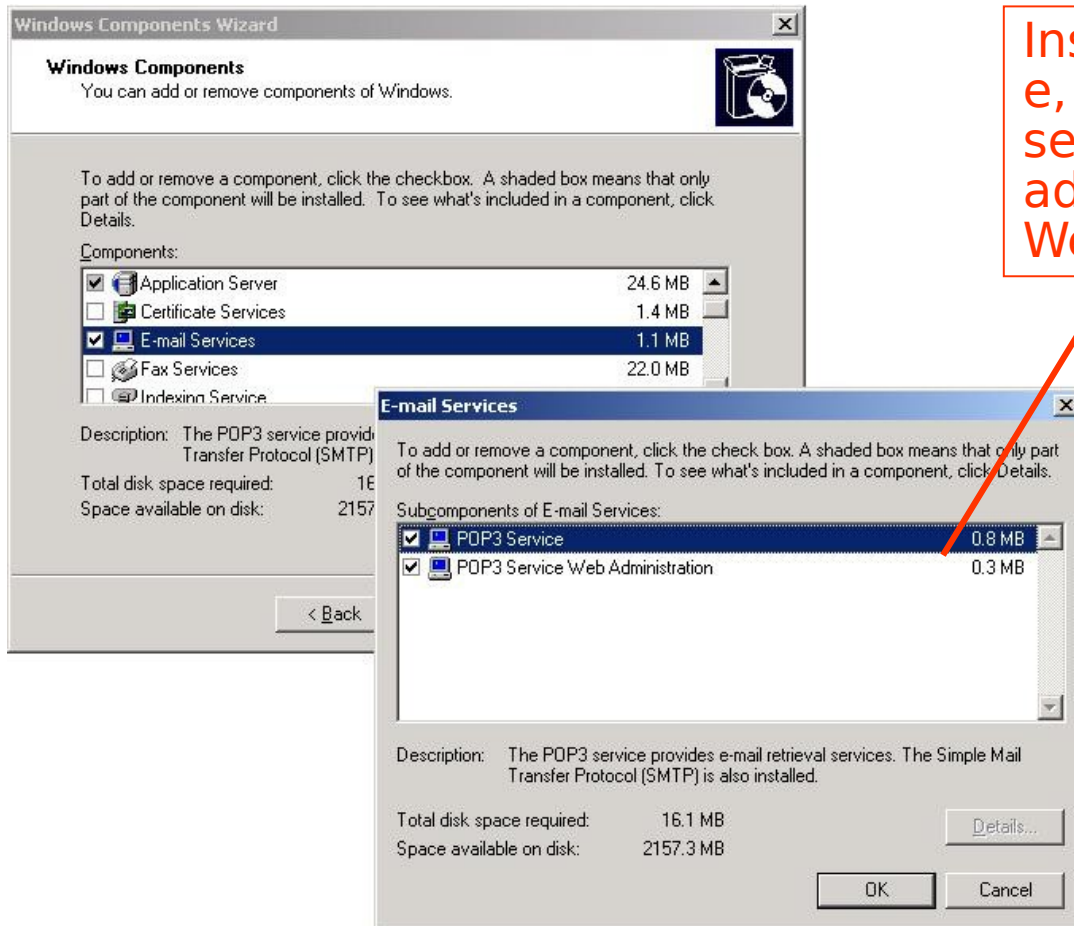


Selecionar o pacote POP3 para instalação.

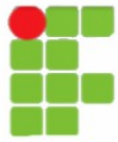
O POP3 é novidade no Windows 2003 Server. Nas outras versões não estava disponível como parte integrante do S.O.



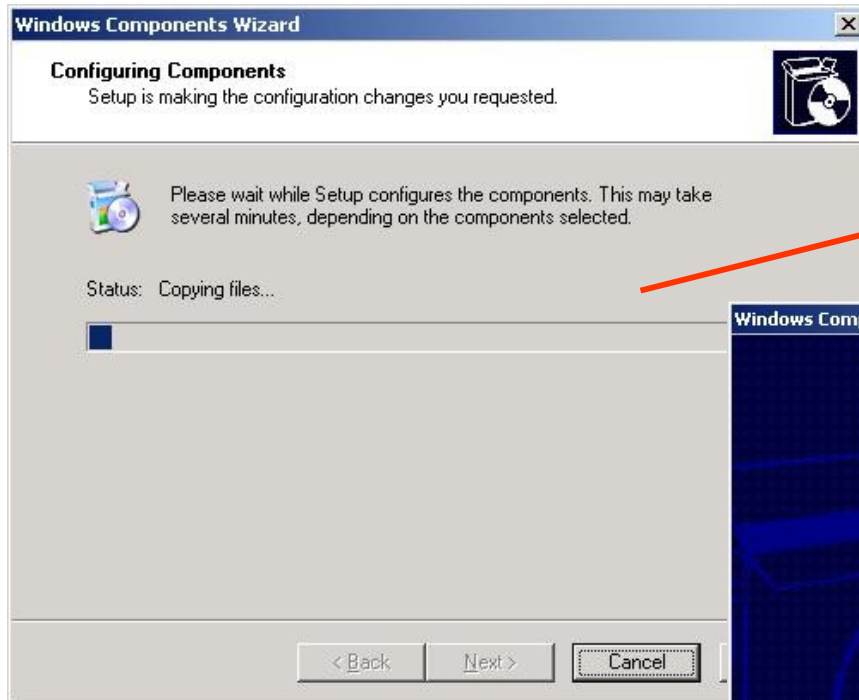
# servidor POP3



Instalação do serviço e, opcionalmente, do serviço de administração via Web.

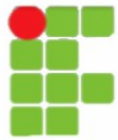


# servidor POP3

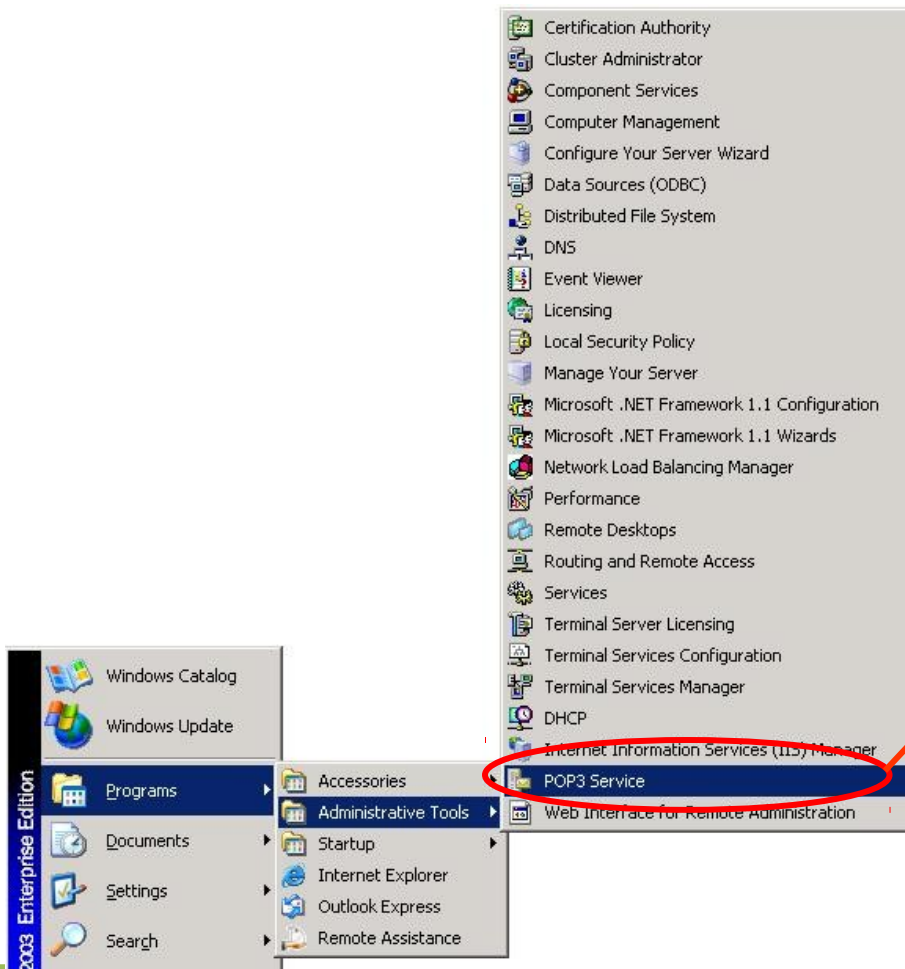


Processo de  
instalação e  
finalização do  
assistente.





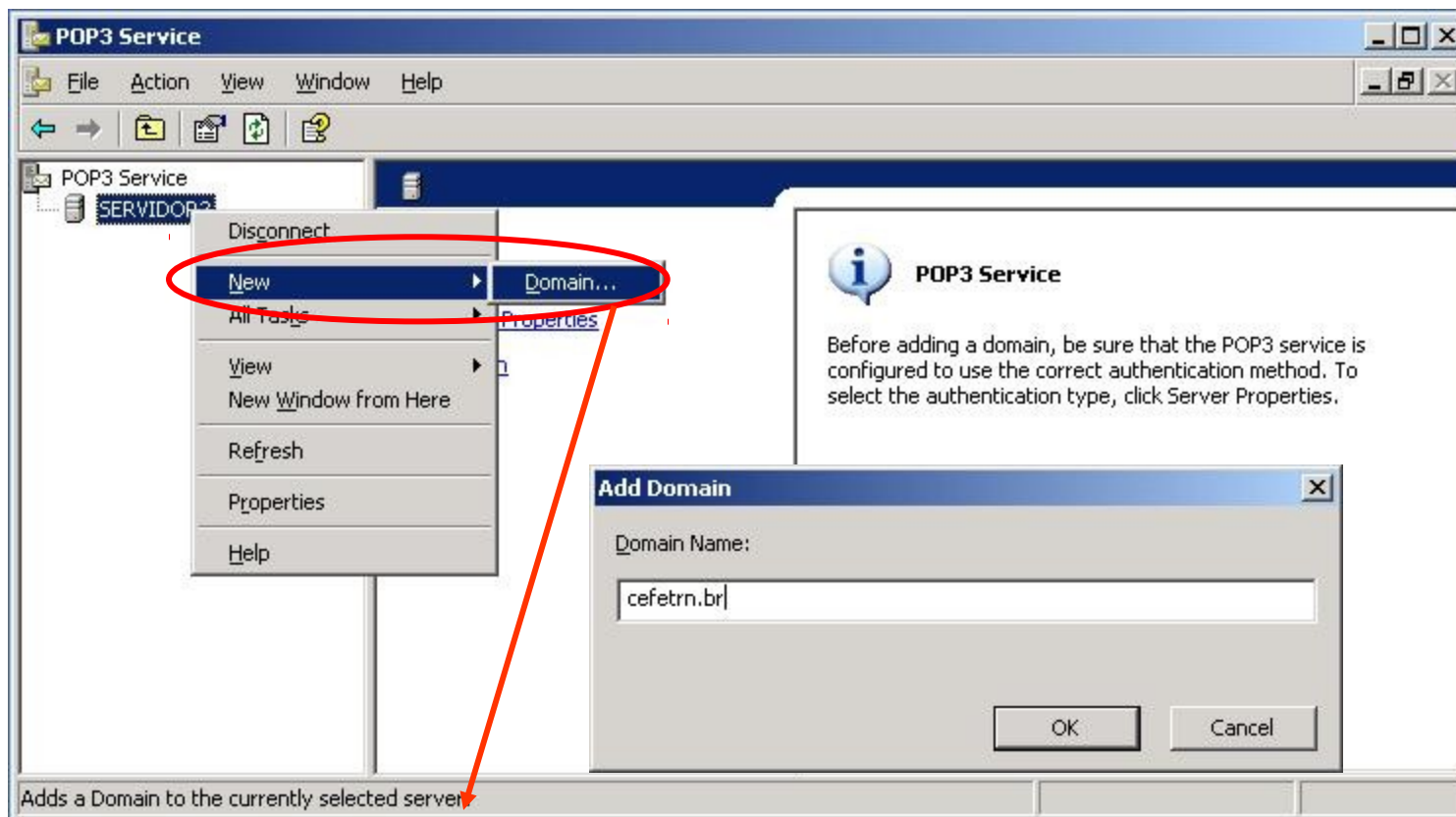
# servidor POP3



Acesso a interface de gerenciamento



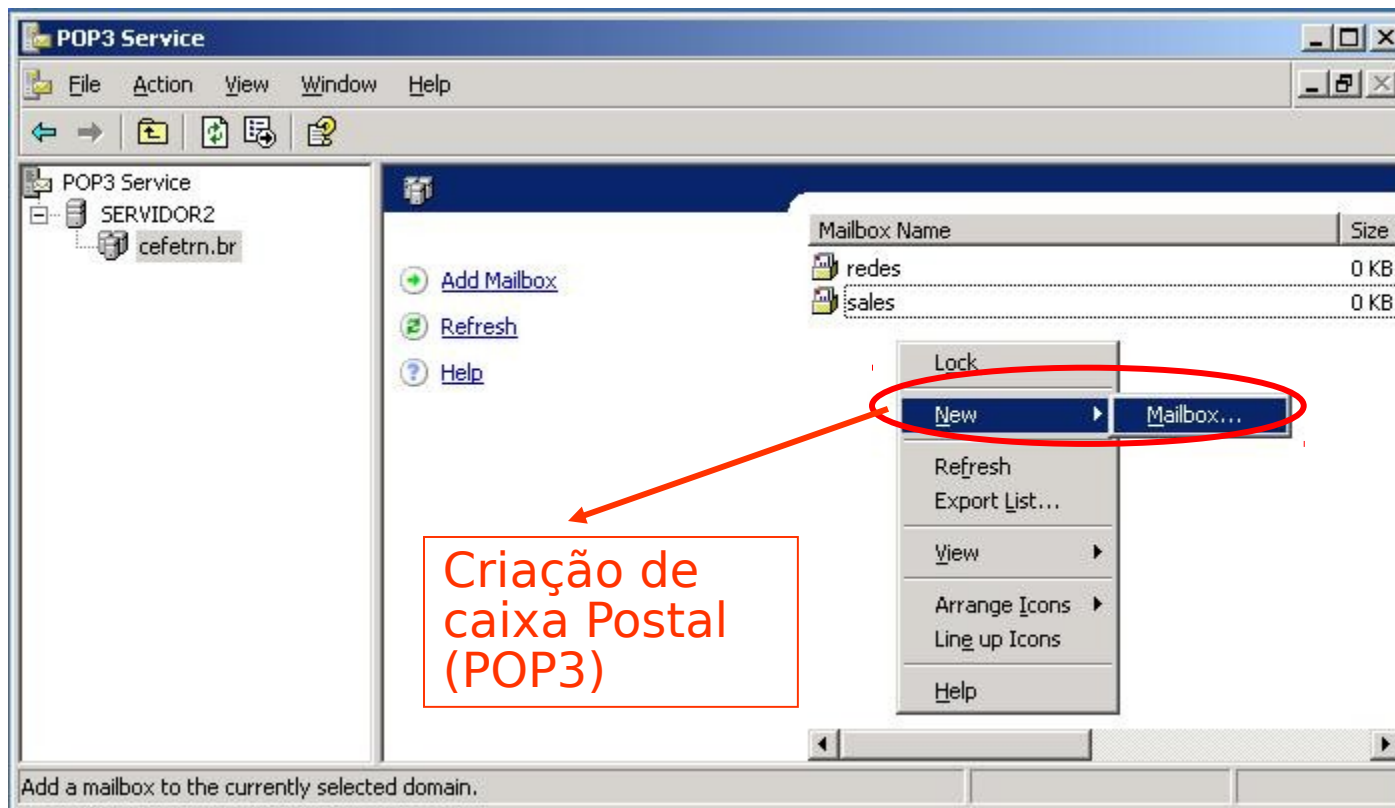
# servidor POP3



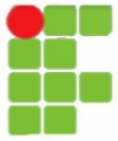
Criação de um novo domínio POP3



# servidor POP3







# servidor POP3

**Add Mailbox** [X]

Mailbox Name:  
bob

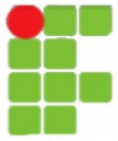
Create associated user for this mailbox

Password: [.....]

Confirm Password: [.....]

OK Cancel

A ferramenta pergunta o nome do usuário e oferece a possibilidade de incluir automaticamente uma conta no sistema.



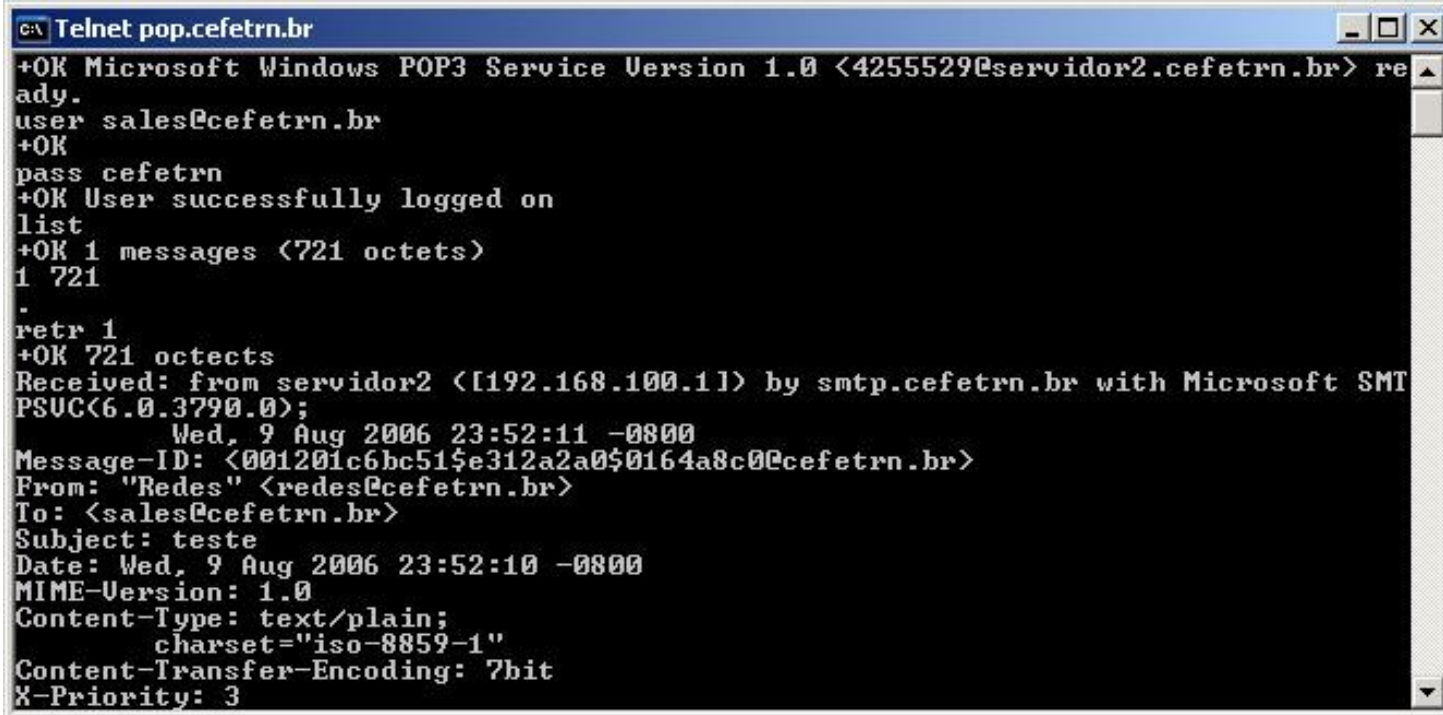
# servidor POP3

```
C:\WINDOWS\system32\cmd.exe
C:\>telnet pop.cefetrn.br 110
```

The screenshot shows a Windows command prompt window with the title bar 'C:\WINDOWS\system32\cmd.exe'. The command prompt shows the command 'telnet pop.cefetrn.br 110' entered. A red oval highlights the command, and a red arrow points from the oval to a text box below.

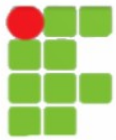
Teste de conexão  
POP3 via telnet  
(telnet domínio porta)

# Configuração do Serviço POP3



```
c:\ Telnet pop.cefetrn.br
+OK Microsoft Windows POP3 Service Version 1.0 <4255529@servidor2.cefetrn.br> ready.
user sales@cefetrn.br
+OK
pass cefetrn
+OK User successfully logged on
list
+OK 1 messages <721 octets>
1 721
-
retr 1
+OK 721 octets
Received: from servidor2 ([192.168.100.1]) by smtp.cefetrn.br with Microsoft SMTPSVC(6.0.3790.0);
    Wed, 9 Aug 2006 23:52:11 -0800
Message-ID: <001201c6bc515e312a2a0$0164a8c0@cefetrn.br>
From: "Redes" <redes@cefetrn.br>
To: <sales@cefetrn.br>
Subject: teste
Date: Wed, 9 Aug 2006 23:52:10 -0800
MIME-Version: 1.0
Content-Type: text/plain;
    charset="iso-8859-1"
Content-Transfer-Encoding: 7bit
X-Priority: 3
```

Verificação da caixa postal utilizando terminal texto. É possível, ler e apagar mensagens



# servidor POP3

pop.cefetrn.br Properties

General Servers Connection Security Advanced

Mail Account

Type the name by which you would like to refer to these servers. For example: "Work" or "Microsoft Mail Server".

pop.cefetrn.br

User Information

Name: Bob Esponja

Organization:

E-mail address: bob@cefetrn.br

Reply address:

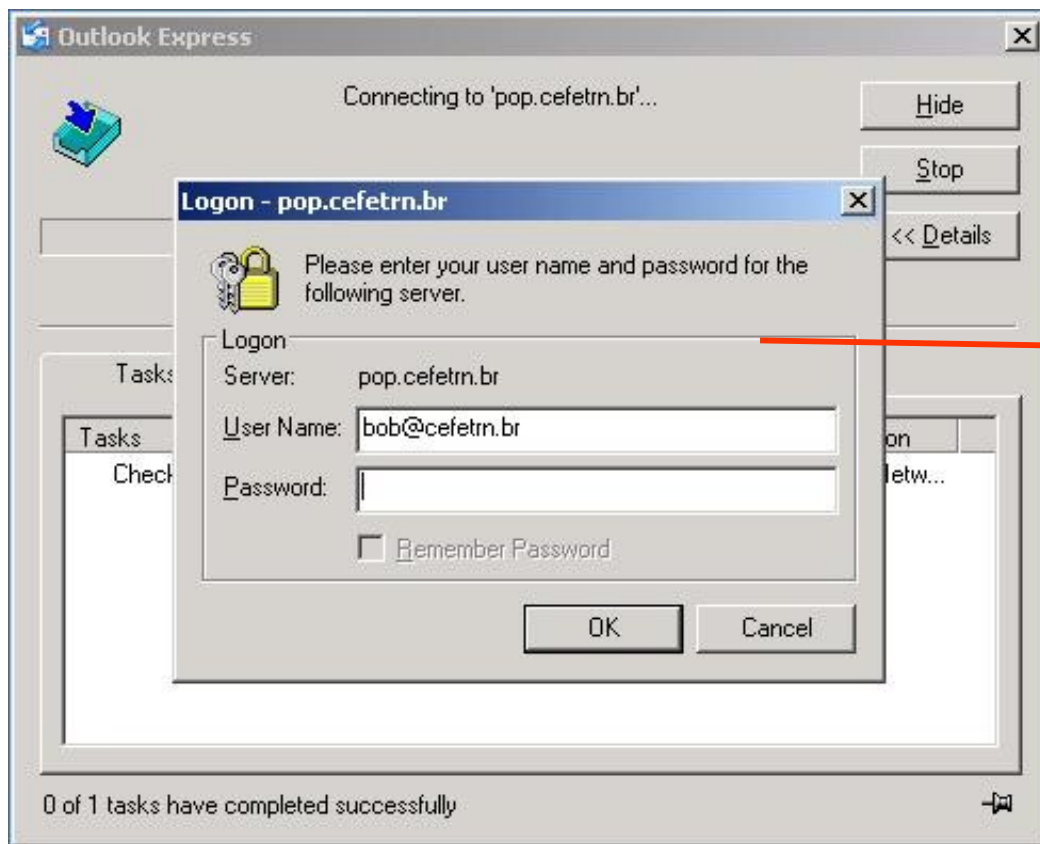
Include this account when receiving mail or synchronizing

OK Cancel Apply

Testando a configuração via cliente Outlook Express



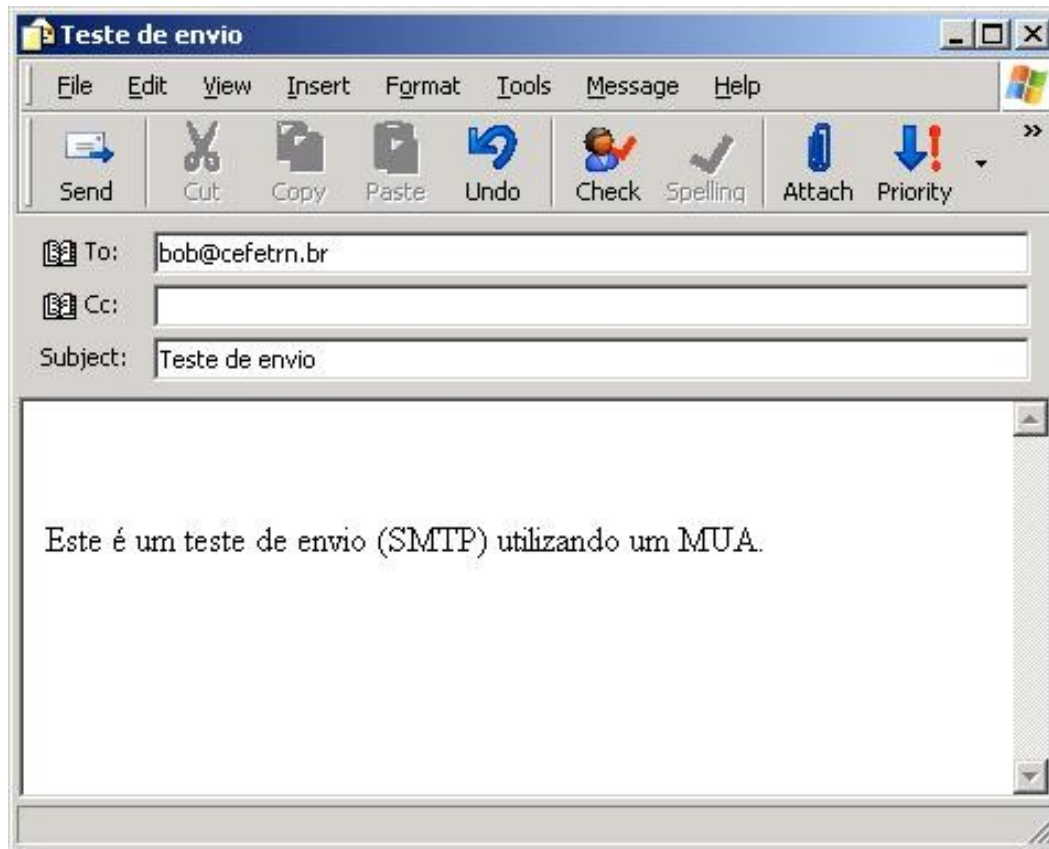
# servidor POP3



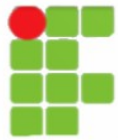
Recebendo mensagem



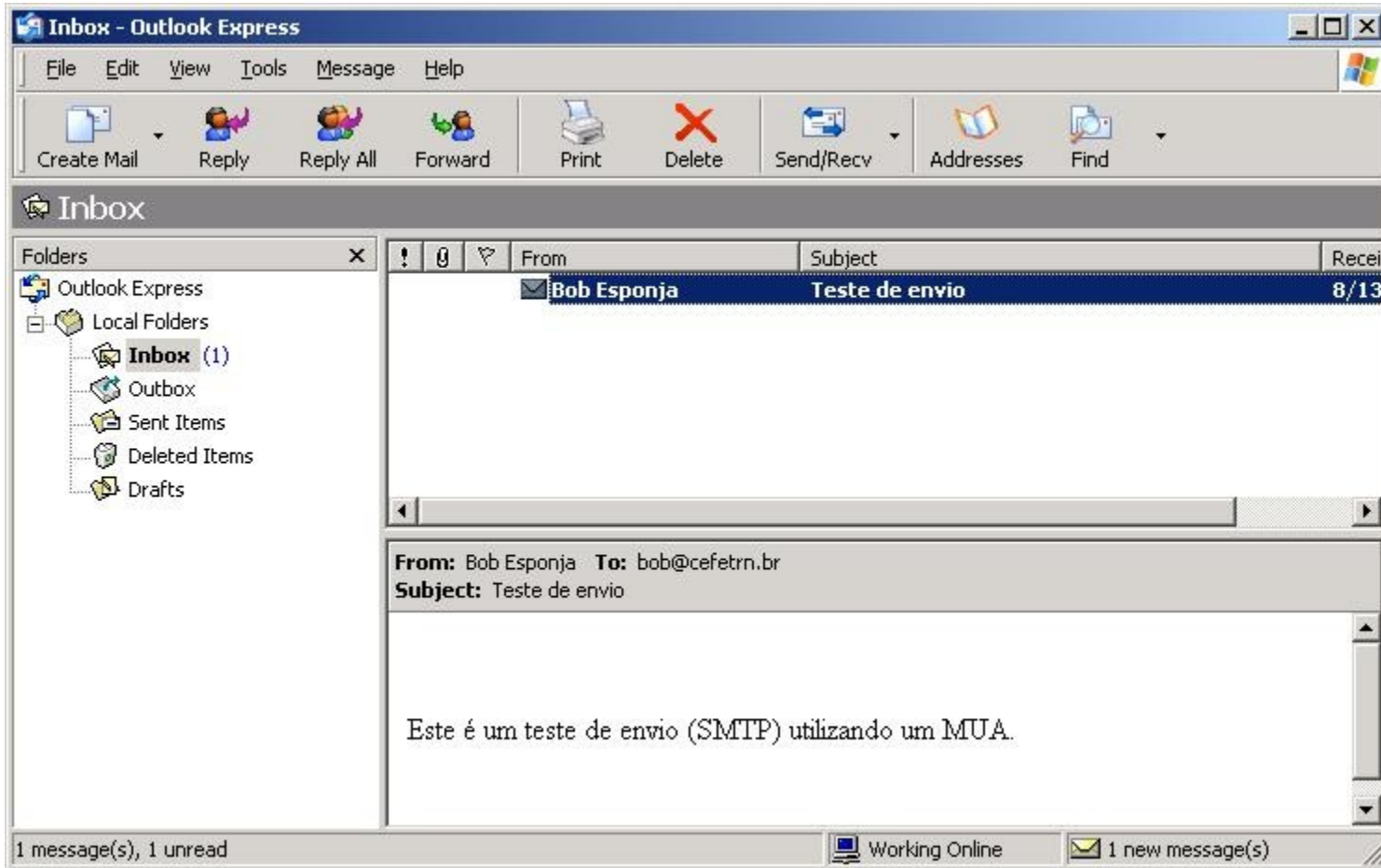
# servidor POP3

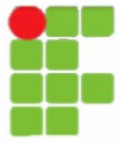


Mensagem  
recebida



# servidor POP3





# servidor POP3

---

·[http://www.juliobattisti.com.br/artigos/windows/tcpip\\_p16.asp](http://www.juliobattisti.com.br/artigos/windows/tcpip_p16.asp)

·Material Sales Filho

Banddini, Francisco. **Microsoft Windows Server 2003.**

**Implementação e administração. Ed. Érica, 2009.**

Sá, Josué de. **Dominando servidores Windows server 2003. Alta Books, 2006.**

Minasi, Mark. **Dominando o windows server 2003 - A bíblia. Makron Books.**

Staneck, Willian R. **Windows server 2008 - Guia completo. Booksman, 2008.**